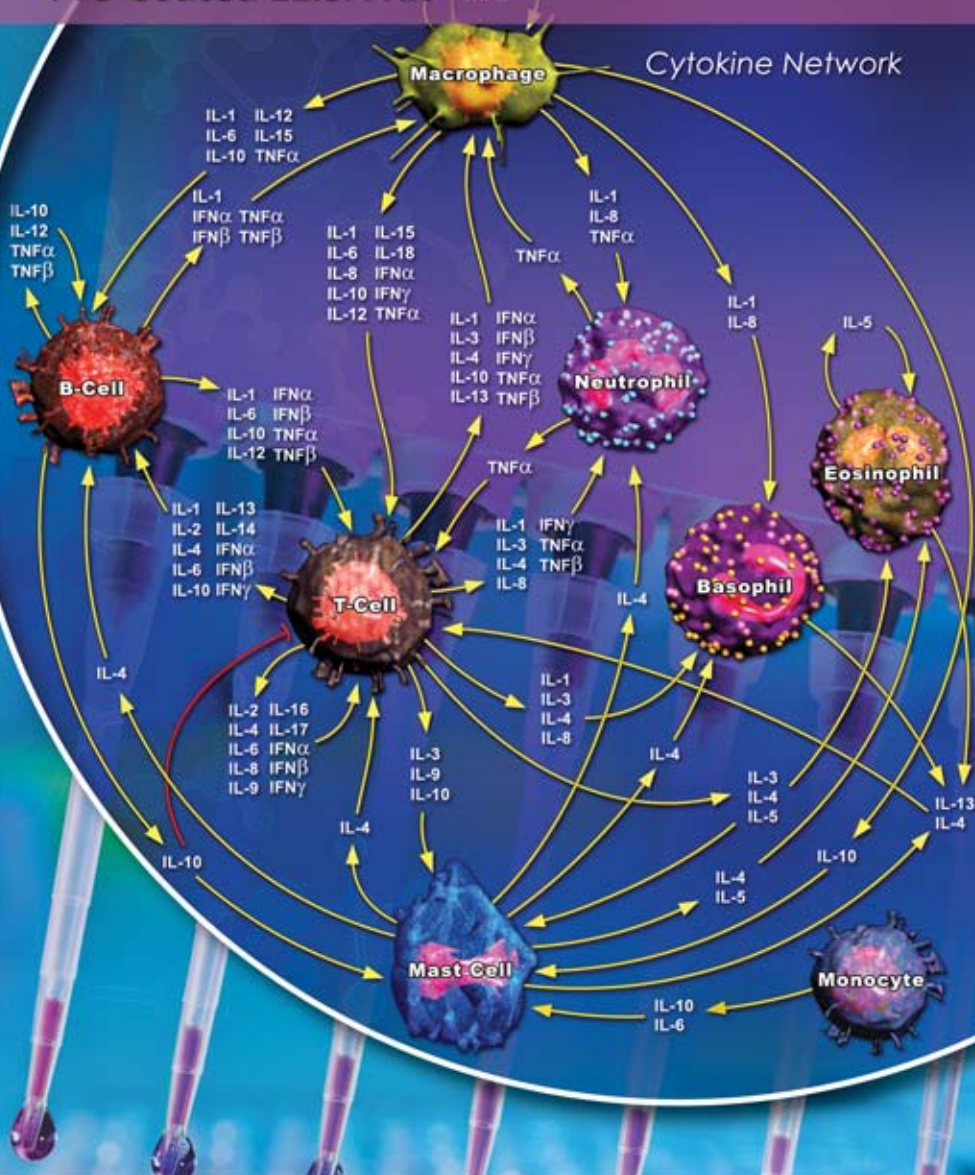


# Mouse IL-7 (Interleukin 7) Pre-Coated ELISA Kit

IFN $\alpha$   
IFN $\beta$   
TNF $\alpha$

Cytokine Network



USER MANUAL

**abeomics**  
www.abeomics.com



# **Mouse IL-7 (Interleukin 7) Pre-Coated ELISA Kit**

Catalog No: 90-2264

1 × 96 well Format (96 tests)

Detection Range: 15.6 – 1000 pg/ml

Sensitivity: < 9.4 pg/ml

This immunoassay kit allows for the in vitro quantitative determination of Mouse IL-7 concentrations in serum, plasma and other biological fluids.

This kit is for Research Use Only. Not for use in diagnostic/therapeutics procedures.

**ABEOMICS, Inc.**

9853 Pacific Heights Blvd, STE D.

San Diego, CA-92121

Email: [info@abeomics.com](mailto:info@abeomics.com)

Website: [www.abeomics.com](http://www.abeomics.com)

## TABLE OF CONTENTS

I.	Background -----	3
II.	Overview -----	3
III.	Advantages -----	3
IV.	Storage -----	3-4
V.	Precautions for Use -----	4-5
VI.	Standard Curve -----	5
VII.	Reagent Preparation and Storage-----	7-9
VIII.	Assay Procedure-----	9-11
IX.	References -----	11-12
X.	Troubleshooting -----	12

## I. BACKGROUND

Mouse IL-7 is a member of the type I cytokine family and a non-redundant regulator of T-cell development and peripheral T-cell homeostasis. It was initially identified as a pre-B cell growth factor, also known as LP-1 (lymphopoiectin-1) and is mainly secreted by non-hematopoietic cells, such as thymic and intestinal epithelial cells, bone marrow stromal cells, keratinocytes, and reticular cells. IL-7 signaling is a prerequisite for optimal CD4 (+) T cell activation and is important for  $\gamma\delta$  T cell proliferation and NKT cell maintenance.

IL-7 signaling at the start of LIP (lymphopenia-induced proliferation) is crucial for the anti-tumor immune response. It also plays a crucial role in multiple mechanisms to overcome chronic viral infections. It plays a pivotal pathogenic role in SS (Sjögren's syndrome) and also intensifies arthritis severity and joint destruction.

## II. OVERVIEW

This assay employs an antibody specific for Anti-mouse IL-7 coated on a 96-well plate. Standards and samples are pipetted into the wells and IL-7 present in a sample is bound to the wells by the immobilized antibody. The wells are washed and biotinylated anti-mouse IL-7 antibody is added. After washing away unbound biotinylated antibody, HRP-conjugated streptavidin is pipetted to the wells. The wells are again washed, a TMB substrate solution is added to the wells and color develops in proportion to the amount of IL-7 bound. The Stop Solution changes the color from blue to yellow, and the intensity of the color is measured at 450 nm.

## III. ADVANTAGES

Multiple samples can be analyzed in a low volume, high-throughput format.

Full analysis can be complete in 2 hours.

## IV. STORAGE

Kit can be stored in 4°C, if you are using within a week.

If you are using within 6 months, lyophilized standard can be stored in -20°C and other components at 4°C.

### Kit Components

Item	Specifications	Storage
96 well Strip ELISA Plate	8 × 12 well	4°C
Lyophilized Standard	2 vials	-20°C
Sample and Standard Dilution Buffer	20 ml	4°C
Biotinylated Detection Antibody for mL7	120 µl	4°C
Antibody Dilution Buffer	10 ml	4°C
HRP Conjugated Streptavidin	120 µl	4°C
Streptavidin Dilution Buffer	10 ml	4°C
TMB Substrate	10 ml	4°C
Stop Solution	10 ml	4°C
25X Wash Buffer	30 ml	4°C
Plate Sealer	5 pieces	
Product Manual	1	

### Material Required, (Not Supplied)

Microplate Reader  
 37°C Incubator  
 Plate Reader  
 Multi Chanel Pipette and disposable tips  
 Eppendorf Tubes  
 Deionized Water

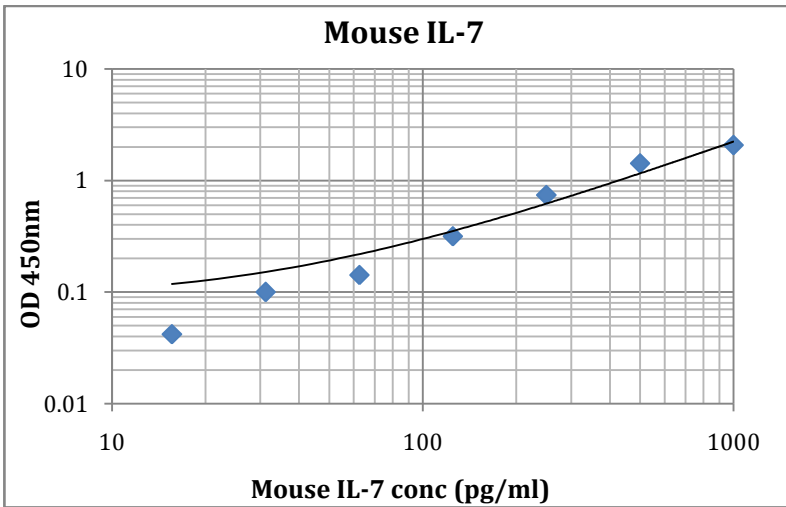
## V. PRECAUTIONS FOR USE

1. To inspect the validity of experiment operation and the appropriateness of sample dilution proportion, pilot experiment using standards and a small number of samples is recommended.
2. After opening and before using, keep plate dry.

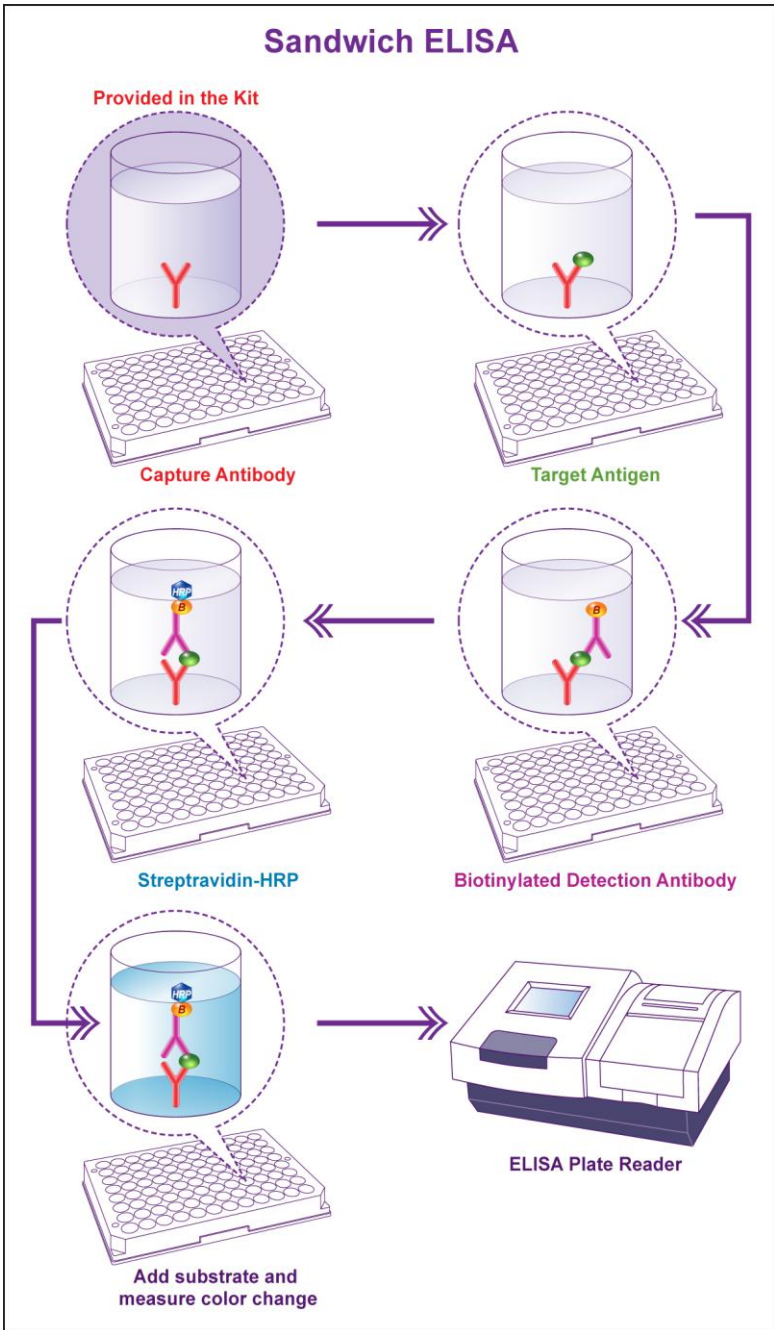
3. Before using the Kit, spin tubes and bring down all components to the bottom of tubes.
4. Storage TMB reagents avoid light.
5. Washing process is very important, not fully wash easily cause a false positive.
6. Duplicate well assay is recommended for both standard and sample testing.
7. Don't let Micro plate dry at the assay, for dry plate will inactivate active components on plate.
8. Don't reuse tips and tubes to avoid cross contamination.
9. Avoid using the reagents from different batches together.

## VI. STANDARD CURVE

Mouse IL-7 Standard Curve is shown below.



X	pg/ml	1000	500	250	125	62.5	31.25	15.6	0
Y	O.D.450	2.133	1.490	0.805	0.380	0.205	0.163	0.105	0.063

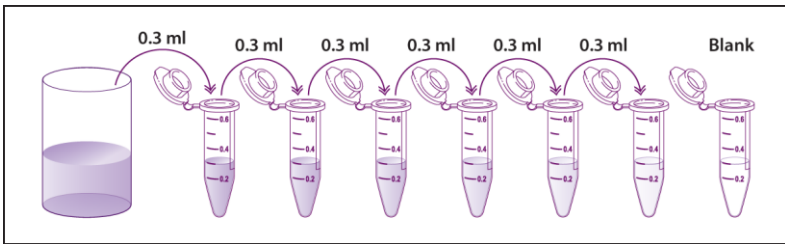




## VII. REAGENT PREPARATION AND STORAGE

*Included buffers and reagents are optimized for use with this kit. Substitution with other reagents is not recommended and may not give optimal results.*

1. **Prepare Standard Curve:** One hour before the experiment.
  - a. Quick spin down one vial of lyophilized standard. (**DO NOT dilute standard directly on the plate**). Add 1ml of sample/standard dilution buffer into one of the standard tube. Incubate at room temp. for 10 min. Mix thoroughly by vortex. Stock Standard concentration is 1000 pg/ml.
  - b. Label 6 eppendorf tubes with 500 pg/ml, 250 pg/ml, 125 pg/ml, 62.5 pg/ml, 31.2 pg/ml, 15.6 pg/ml respectively. Add 0.3 ml of sample/standard dilution buffer into each tube. Add 0.3 ml of stock standard (1000 pg/ml) into 1<sup>st</sup> tube and mix thoroughly. Transfer 0.3 ml from 1<sup>st</sup> tube to 2<sup>nd</sup> tube and mix thoroughly. Transfer 0.3 ml from 2<sup>nd</sup> tube to 3<sup>rd</sup> tube mix thoroughly, and so on.



**Fig-1: Dilution tubes**

**Note:** Standard Solutions are best used within 2 hrs. Standard solution should be stored at 4°C for up to 12 hrs. or store at -20°C for up to 48 hrs. Avoid repeated freeze-thaw.

2. **Sample Preparation and storage:** Test samples should be collected, analyze immediately (within 2 hrs.) or aliquot and store at -20°C for long term. Avoid multiple freeze-thaw cycles.
  - a. **Cell culture supernatants:** Centrifuge to remove precipitate, analyze immediately or aliquot and store at -20°C.

- b. Serum:** Coagulate the serum at room temp about 1 hr. Centrifuge approximately  $1000 \times g$  for 15 min. Analyze serum immediately or aliquot and store at  $-20^{\circ}\text{C}$ .
- c. Plasma:** Collect plasma with heparin or EDTA as the anti-coagulant. Centrifuge for 15 min at  $2-8^{\circ}\text{C}$  at  $1500 \times g$  within 30 min of collection. For eliminating the platelet effect, suggesting that further centrifugation for 10 min at  $2-8^{\circ}\text{C}$  at  $10,000 \times g$ . Analyze immediately or aliquot and store frozen at  $-20^{\circ}\text{C}$ .
- d. Tissue Homogenates:** For general information, hemolytic blood may affect the results, you should rinse the tissues with ice cold PBS (0.01M, pH 7.4) to remove excess blood thoroughly. Tissue pieces should be weighed and then minced to small pieces. This will be homogenized in PBS in a cold glass homogenizer. (*Volume depends on the weight of the tissue, 1gram of tissue requires 9 ml of ice cold PBS with protease inhibitor*). To further break the cells, you can sonicate the suspension with an ultrasonic cell disrupter or subject it to freeze- thaw cycle. Homogenates are then centrifuged for 5 min. at  $5000 \times g$  to get the supernatant.

**Note:** *Samples to be used within 5 days may be store at  $4^{\circ}\text{C}$ , otherwise sample should be stored at  $-20^{\circ}\text{C}$  (< 1 month) or  $-80^{\circ}\text{C}$  (<2 months) to avoid loss of bioactivity and contamination. Hemolyzed samples are not suitable for use in this Assay.*

- e.** End user should estimate the concentration of the target protein in the test samples first, then select proper dilution factor to make the diluted target protein concentration falls the optimal detection range of the kit. Dilute the samples with the provided dilution buffer. Several trials may be necessary in practice. The test sample should be well mixed with the dilution buffer. Standard curve and sample should be made before the experiment.

High target protein concentration 10-100 ng/ml:  
Dilute 1:100 (add  $1 \mu\text{l}$  of sample into  $99 \mu\text{l}$  of sample/  
standard dilution buffer).

Medium target protein concentration 1-10 ng/ml:  
Dilute 1:10 (add 10  $\mu$ l of sample into 90  $\mu$ l of sample/  
standard dilution buffer).

Low target protein concentration 15.6-1000 pg/ml:  
Dilute 1:2 (add 50  $\mu$ l of sample into 50  $\mu$ l of sample/  
standard dilution buffer).

Very low target protein concentration < 15.6 pg/ml: Do  
not dilute, use 100  $\mu$ l of sample or 1:2 dilution.

- 3. Preparation of Biotin detection antibody working solution:** Prepare within one hour before the experiment. Calculate total volume working solution required. (0.1 ml/well  $\times$  number of wells. Add 100-200  $\mu$ l extra).

Dilute Biotin detection antibody with antibody dilution buffer at 1:100 and mix thoroughly. (*i.e.* add 1  $\mu$ l of Biotin conjugated detection antibody into 99  $\mu$ l of antibody dilution buffer).

- 4. Preparation of HRP-Streptavidin Conjugate (SABC) working solution:** Prepare within 30 min before the experiment. Calculate total volume working solution required. (0.1 ml/well  $\times$  number of wells. Add 100- 200  $\mu$ l extra).

Dilute SABC with SABC dilution buffer at 1:100 and mix thoroughly. (*i.e.* add 1  $\mu$ l of SABC into 99  $\mu$ l of SABC dilution buffer).

- 5. Preparation of 1 X Wash buffer:** Prepare 1 X Wash buffer by diluting 25X Wash buffer in sterile water. Diluted Wash buffer may be stored at 4°C, however we recommend preparing fresh 1X wash buffer for each experiment.

*For example: 10 ml of 25X Wash buffer in 240 ml of sterile water.*

## VIII. ASSAY PROCEDURE

Before starting the experiment, equilibrate the SABC working solution and TMB substrate for at least 30 min at room temp. When diluting samples and reagents, they should be mixed completely and evenly. It is recommended to plot a standard curve for each test.

*\* If not all microplate strips will be used, remove the excess strips by pressing up from underneath each strip. Place excess strips back in the foil pouch with the included desiccant pack and reseal.*

1. Set standard, test sample and blank (control zero) wells on the pre-coated plate and then record their position. It is recommended to measure each standard and sample in duplicate. **Note:** Wash plate twice before adding standard, sample and blank into the well.
2. Add 0.1 ml of standard (1000 pg/ml, 500 pg/ml, 250 pg/ml, 125 pg/ml, 62.5 pg/ml, 31.25 pg/ml, 15.6 pg/ml, control zero dilution buffer) into standard well.
3. Add 0.1 ml of diluted samples into test sample wells.
4. Seal plate with a cover and incubate at 37°C for 90 min.
5. Remove the cover and discard samples and standard solution by tapping plate on an absorbent paper. **Note:** DO NOT let the wells completely dry any time. DO NOT wash plate.
6. Add 0.1 ml of Biotin-detection antibody working solution into the above wells (Standards, control zero and samples).
7. Seal plate with cover and incubate at 37°C for 60 min.
8. Remove the cover, and wash plate 3 times with 1X wash buffer.
9. Add 0.1 ml of SABC working solution into each well. Cover the plate and incubate at 37°C for 30 min.
10. Remove the cover and wash plate 5 times with 1X wash buffer. Each time let the wash buffer stay in the well for 1-2 min.
11. Add 90 µl of TMB substrate into each well, cover the plate and incubate at 37°C in dark within 15-30 min. (**Note:** This incubation time is for reference use only. The optimal time should be determined by end user). The shades of blue can be seen in the first 3-4 wells, only on most concentrated standards. Other wells show no obvious color.
12. Add 50 µl of stop solution into each well and mix thoroughly. Color will change into yellow immediately.
13. Read O.D. absorbance at 450 nm in a micro-plate reader immediately after adding the stop solution.

**14.** Calculation: Relative O.D. 450 = O.D. for each well – O.D. 450 control zero well. The Standard curve can be plotted as the relative O.D. 450 of each standard solution in Y axis vs. the respective concentration of the standard in X axis. Concentration of the samples can be incorporated from the standard curve. If the samples were diluted, multiply the dilution factor to the concentration.

**Table-1**

	Standard 1	Standard 2	3	4	5	6	7	8	9	10	11	12
A	1000 pg/ml	1000 pg/ml										
B	500 pg/ml	500 pg/ml										
C	250 pg/ml	250 pg/ml										
D	125 pg/ml	125 pg/ml										
E	62.5 pg/ml	62.5 pg/ml										
F	31.25 pg/ml	31.25 pg/ml										
G	15.6 pg/ml	15.6 pg/ml										
H	0	0										

**IX. REFERENCES**

1. IL-7 production in murine lymphatic endothelial cells and induction in the setting of peripheral lymphopenia.  
PMID: 23657000
2. Osteoblast-specific overexpression of human interleukin-7 rescues the bone mass phenotype of interleukin-7-deficient female mice.  
PMID: 22258693
3. Crucial roles of interleukin-7 in the development of T follicular helper cells and in the induction of humoral immunity.  
PMID: 24899182

4. Interleukin-7 is required for CD4(+) T cell activation and autoimmune neuroinflammation.  
PMID: 26319414
5. Requirement of interleukin 7 signaling for anti-tumor immune response under lymphopenic conditions in a murine lung carcinoma model.  
PMID: 26880265
6. Interleukin-7 produced by intestinal epithelial cells in response to *Citrobacter rodentium* infection plays a major role in innate immunity against this pathogen.  
PMID: 26034215
7. Interleukin-7 enhances the Th1 response to promote the development of Sjögren's syndrome-like autoimmune exocrinopathy in mice.  
PMID: 23666710
8. Interleukin-7-aggravated joint inflammation and tissue destruction in collagen-induced arthritis is associated with T-cell and B-cell activation.  
PMID: 22676399

## X. TROUBLE SHOOTING

Problem	Probable Cause	Suggestion
No signal	Forgot to add all components.	Prepare check list and add the components in the correct order.
Low signal	Not enough lysates per well.	Check the protein concentration. Add more lysates.
High background	Washing is not sufficient.	Wash plates thoroughly after incubation with Streptavidin-HRP secondary





**ABEOMICS, Inc.**  
9853 Pacific Heights Blvd, STE D.  
San Diego, CA-92121  
Email: [info@abeomics.com](mailto:info@abeomics.com)  
Website: [www.abeomics.com](http://www.abeomics.com)